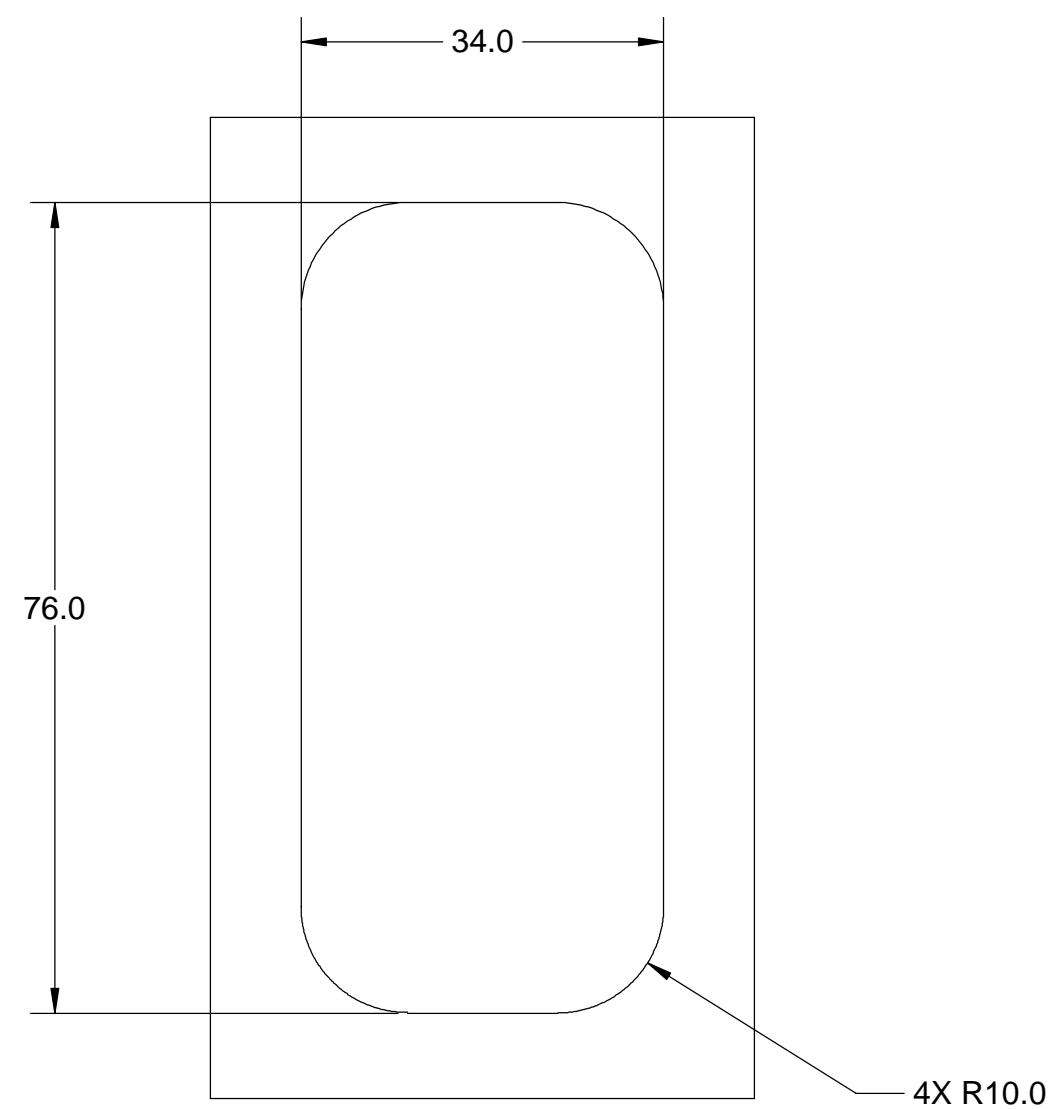
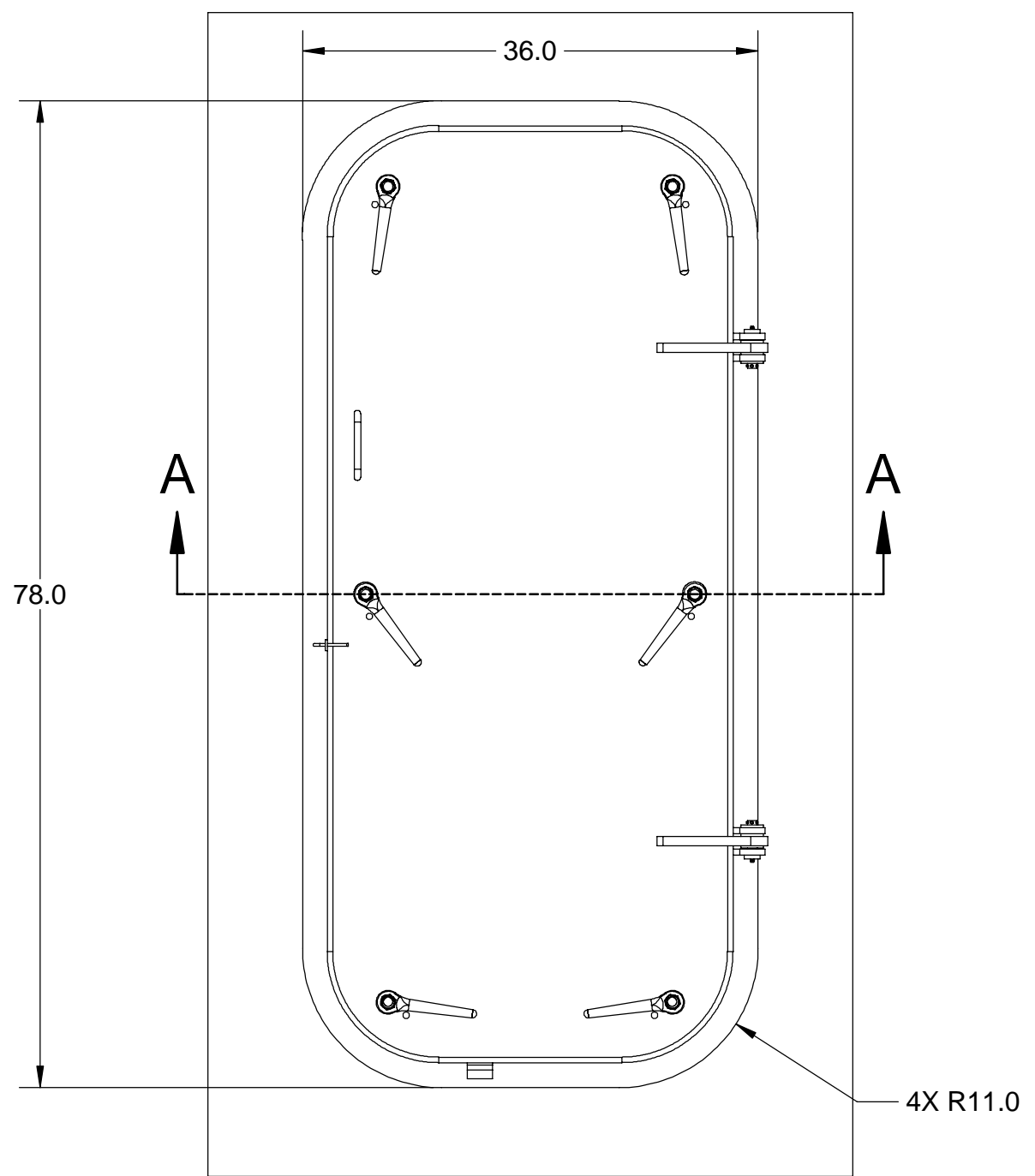
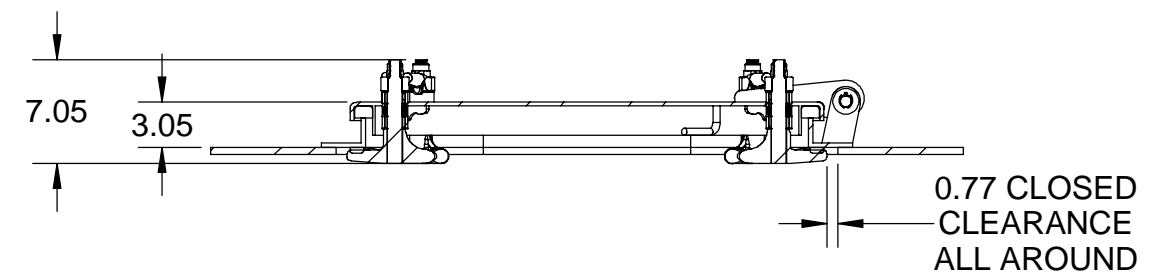


REVISIONS

REV.	ECN	DESCRIPTION	DATE	APPROVED
A	20-00549	*INITIAL RELEASE	09/24/20	RCL

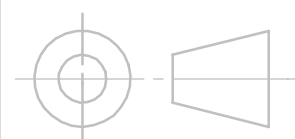


CUT-OUT DIMENSION VIEW
SCALE 1 : 18



SECTION A-A

CLASS MAR	THE INFORMATION CONTAINED IN THIS DOCUMENT IS PROPRIETARY AND SHALL NOT BE PRODUCED OR USED FOR ANY PURPOSE WITHOUT THE WRITTEN APPROVAL OF UNIVERSAL MOTION COMPONENTS		INCHES	UMC UNIVERSAL MOTION COMPONENTS Co., INC. 2920 Airway Ave., Costa Mesa, CA 92626	
					TITLE: DOOR ASSY CUTOUT, 6 DOG 30"X72" R/H
MATERIAL N/A	DWN. TJK	DT 09/17/20	TOLERANCES: ANGLE ± 1/2° .X ± .06 .XX ± .03 .XXX ± .015 .XXXX ± .0050	SIZE DWG. NO.	REV.
WEIGHT(LBS) N/A	CK. FH	DT 09/22/20		B UMC-WTD-6D-30X72-R	A
THIRD ANGLE PROJECTION	APR. RCL	DT 09/23/20		SCALE: 1:13 AND NOTED	SHEET 1 OF 2



8

7

6

5

4

3

2

1

D

D

C

C

B

B

A

A

8

7

6

5

4

3

2

1

8

7

6

5

4

3

2

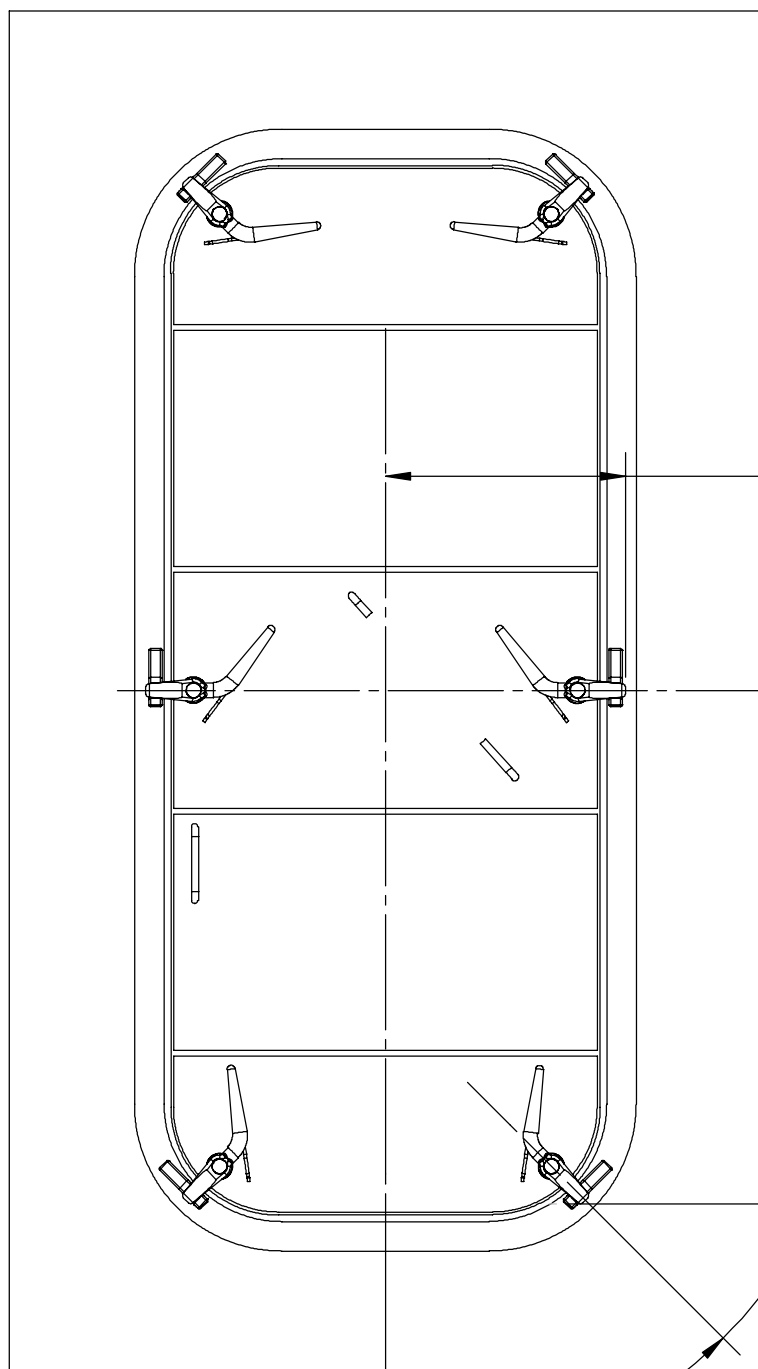
1

D

C

B

A



16.23

ϕ

34.76

45° TYP
CLOSED POSITION

BOTTOM VIEW

THIRD ANGLE PROJECTION



UMC UNIVERSAL MOTION COMPONENTS Co., INC. 2920 Airway Ave., Costa Mesa, CA 92626	SIZE	DWG. NO.	REV.
	B	UMC-WTD-6D-30X72-R	A
SCALE: 1:13 AND NOTED		SHEET 2 OF 2	

8

7

6

5

4

3

2

1