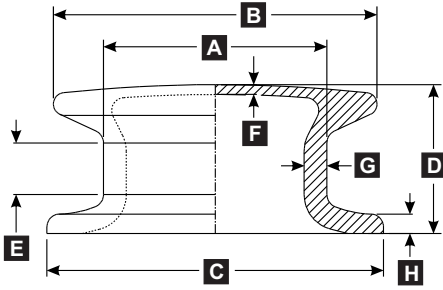


Button Chocks **ASTM A27-70-36 Cast Steel**



MODEL	DESCRIPTION	PART #	DIMENSIONS IN INCHES (MM)								LBS (KGS)
			A	B	C	D	E	F	G	H	
UMC-192	BUTTON CHOCK, 6"	01160-301A	6" Ø (152)	8.5" Ø (216)	12" Ø (305)	4.13" (181)	1.13" R (105)	.75" (89)	.75" (19)	.52" (13)	38 (17)
UMC-473	BUTTON CHOCK, 8"	01180-301A	8.6" Ø (218)	12.5" Ø (318)	13" Ø (330)	5.75" (146)	2" (51)	.38" (10)	.88" (22)	.75" (19)	75 (34)
UMC-185	BUTTON CHOCK, 10"	01170-301A	10" Ø (254)	15" Ø (381)	17" Ø (432)	8.5" (216)	N/A (N/A)	.5" (13)	1" (25)	.63" (16)	144 (65)