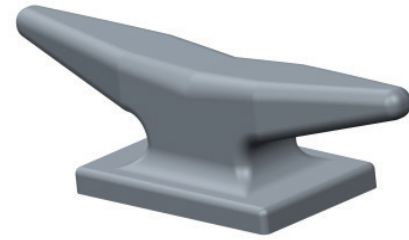


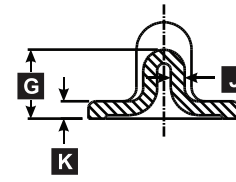
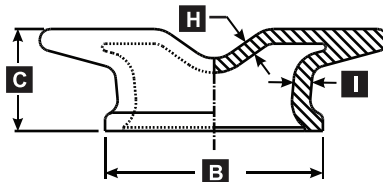
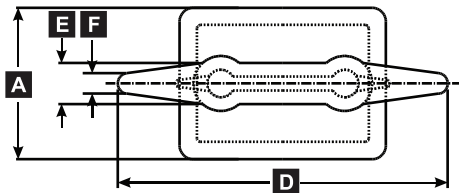
Small Kevel | 12", 18" Cast Steel

Universal Kevel.
ASTM A27-70-36 Cast Steel

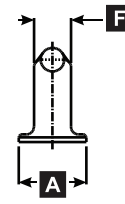
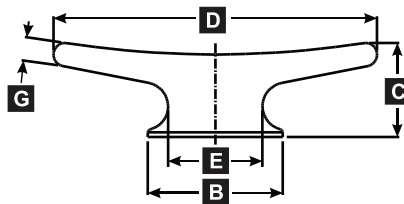


Model Number	Description	Autocad PDF/DXF	Part Number	Weight Total Lbs (Kgs.)
UMC-K12B	12" Kevel Large Base		08740-301A	12 (5.4)
UMC-K12A	12" Kevel Small Base		08720-301A	7.6 (3.4)
UMC-518	18" Kevel		02720-301A	34 (15.4)

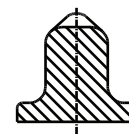
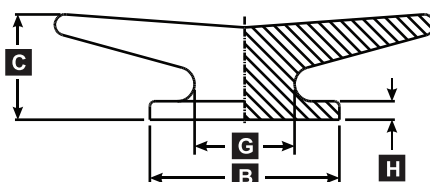
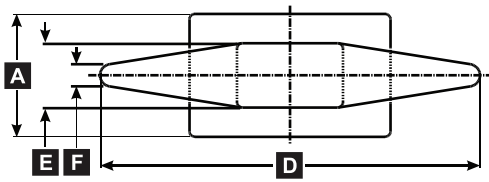
Small Kevels ASTM A27-70-36 Cast Steel



MODEL	DESCRIPTION	PART #	DIMENSIONS IN INCHES (MM)										LBS (KGS)	
			A	B	C	D	E	F	G	H	I	J		K
UMC-K12B	KEVEL, 12" LARGE BASE	08740-301A	5.5" (140)	7.5" (191)	3.5" (89)	12" (305)	1.5" (38)	.75" (19)	2.5" (64)	.5" (13)	.63" (16)	.5" (13)	.63" (16)	12 (5.4)



MODEL	DESCRIPTION	PART #	DIMENSIONS IN INCHES (MM)						LBS (KGS)	
			A	B	C	D	E	F		G
UMC-K12A	KEVEL, CLEAT 12" SMALL BASE	08720-301A	2.5" (64)	5" (127)	3.5" (89)	12" (305)	3.5" (89)	1.38" (35)	.88" (22)	7.6 (3.4)



MODEL	DESCRIPTION	PART #	DIMENSIONS IN INCHES (MM)							LBS (KGS)	
			A	B	C	D	E	F	G		H
UMC-518	KEVEL, 18"	02720-301A	5.5" (140)	9" (2904)	5" (127)	18" (457)	2.88" (73)	1" (25)	4.75" (121)	.88" (22)	34 (15.4)