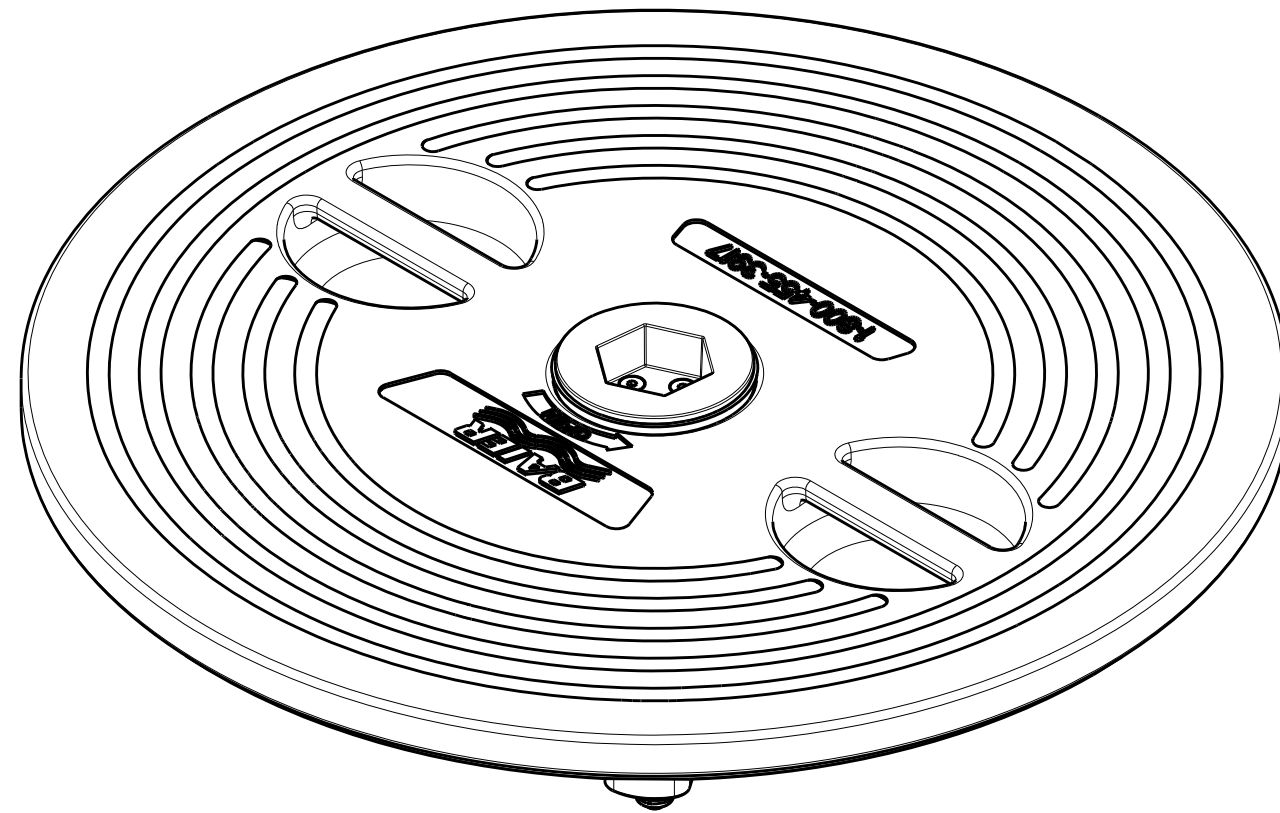

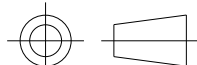


REVISIONS					
REV	ECN	ECR-TN	DESCRIPTION	DATE	APR
A	16-00209	N/A	INITIAL RELEASE	08/19/16	RCL



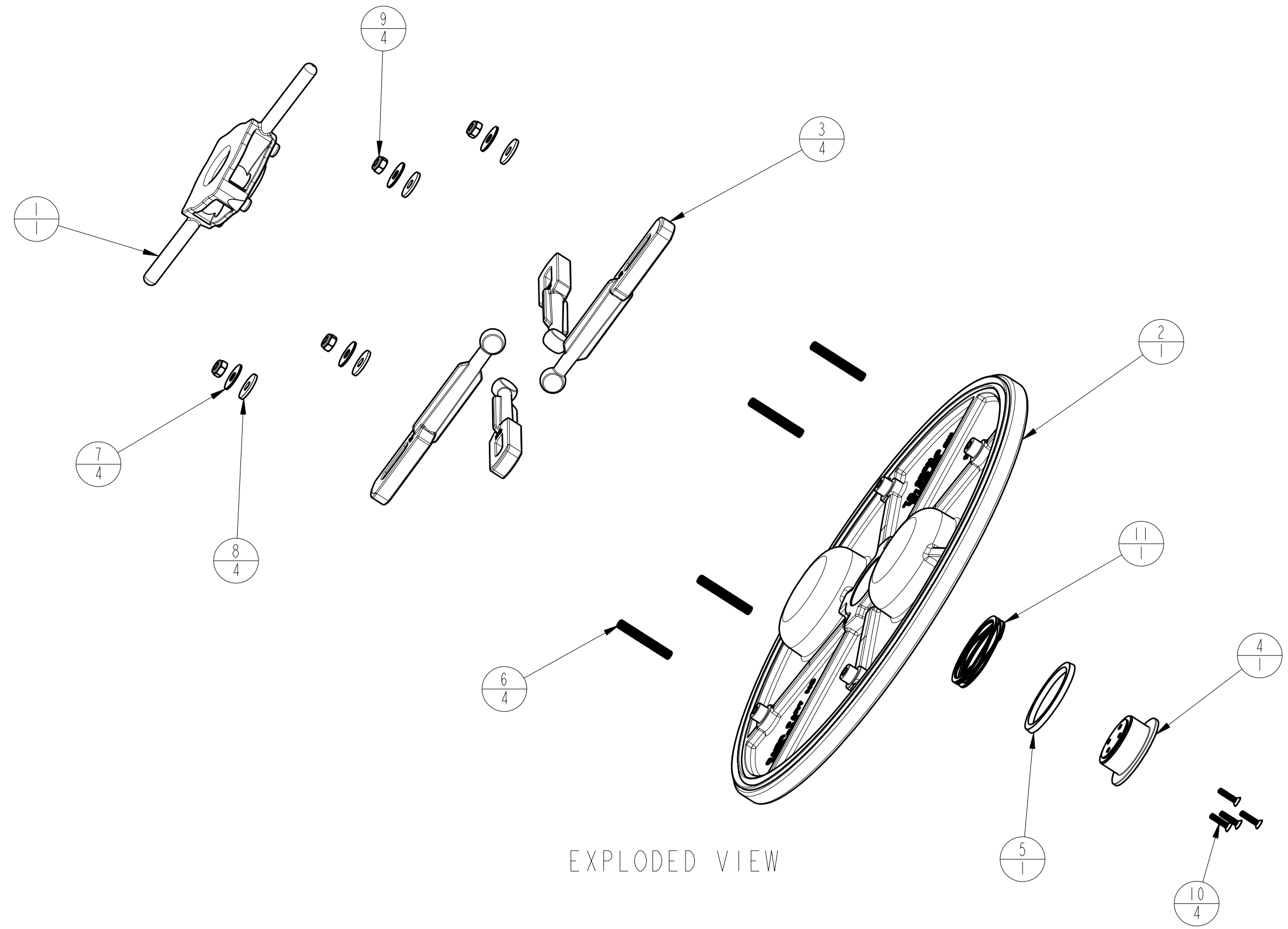
ISOMETRIC VIEW

QTY	DESCRIPTION	PART NO	ITEM
1	WAVE SPRING, LP-QA HATCH	08864-818A	11
4	SCREW, FT HD M6 X 1 X 25mm LG S.S.	08864-812A	10
4	NUT, NYLOCK M10 X 1.5 S.S.	08864-807A	9
4	WASHER, .43 ID X 1.25 OD S.S.	08864-805A	8
4	WASHER, BUSHING	08864-803A	7
4	STUD, M10 X 1.5P X 2.75LG S.S.	08864-802A	6
1	GASKET, LP-QA TAPERED SEAL	08864-711A	5
1	HEX DRIVE SOCKET	08864-246A	4
4	DOG, LOCKING ARM 20"	08864-209A	3
1	COVER-GASKET 20" LP-QA ASSY	08864-163A	2
1	LP DOG HUB ASSY	08864-103A	1

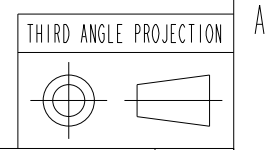
PRO/E		THE INFORMATION CONTAIN IN THIS DOCUMENT IS PROPRIETARY AND SHALL NOT BE REPRODUCED OR USED FOR ANY PURPOSE WITHOUT THE WRITTEN APPROVAL OF BAIER MARINE CO., INC.		 2920 Airway Ave., Costa Mesa, CA 92626	
THIRD ANGLE PROJECTION				TITLE <b>COVER ASSY 20" LP-QA</b>	
DWN	BAE	DT	01/06/16	SIZE	B
CK		DT		DWG NO.	BFHLP20A
APR		DT		SCALE	3:10 AND NOTED
				SHEET	1 OF 3

UMC P/N REF  
08864-162A

REVISIONS					
REV	ECN	ECR-TN	DESCRIPTION	DATE	APR
A	16-00209	N/A	SEE SHEET 1	08/19/16	RCL

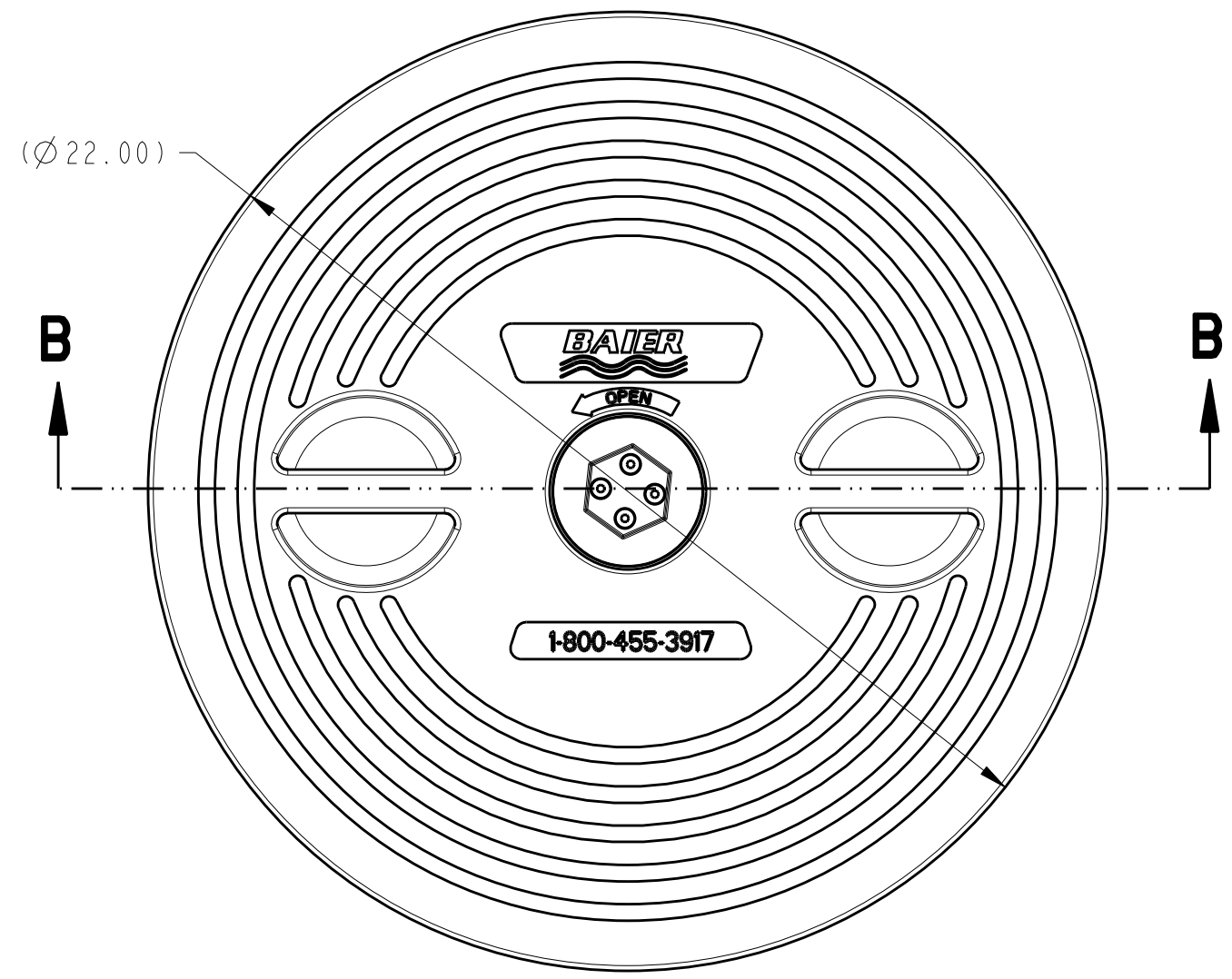


EXPLODED VIEW

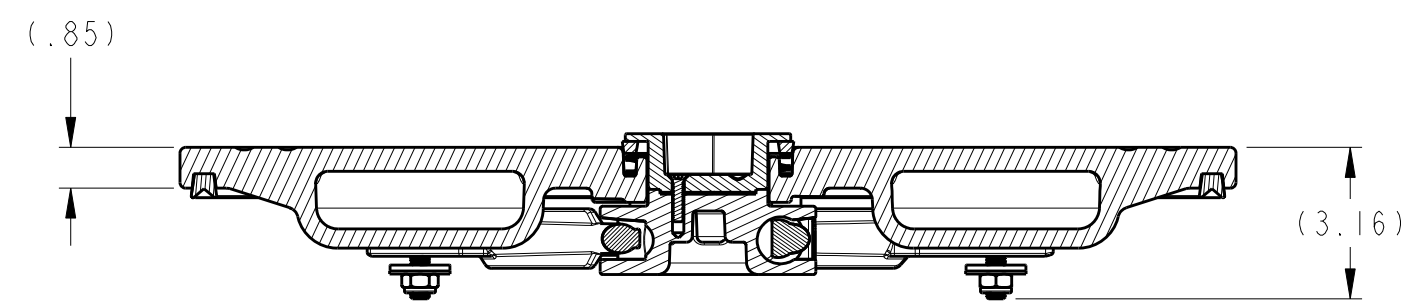


BAIER MARINE Co., Inc. 2920 Airway Ave., Costa Mesa, CA 92626		DWN DT	DWG NO. BFHLP20A	REV A
SCALE 11:50		SHEET 2 OF 3		

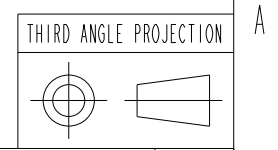
REVISIONS					
REV	ECN	ECR-TN	DESCRIPTION	DATE	APR
A	16-00209	N/A	SEE SHEET 1	08/19/16	RCL



TOP VIEW



SECTION B-B



BAIER MARINE Co., Inc. 2920 Airway Ave., Costa Mesa, CA 92626		DWN DT	DWG NO. BFHLP20A SCALE 1:4 SHEET	REV A 3 OF 3
--	--	-----------	-------------------------------------	-----------------